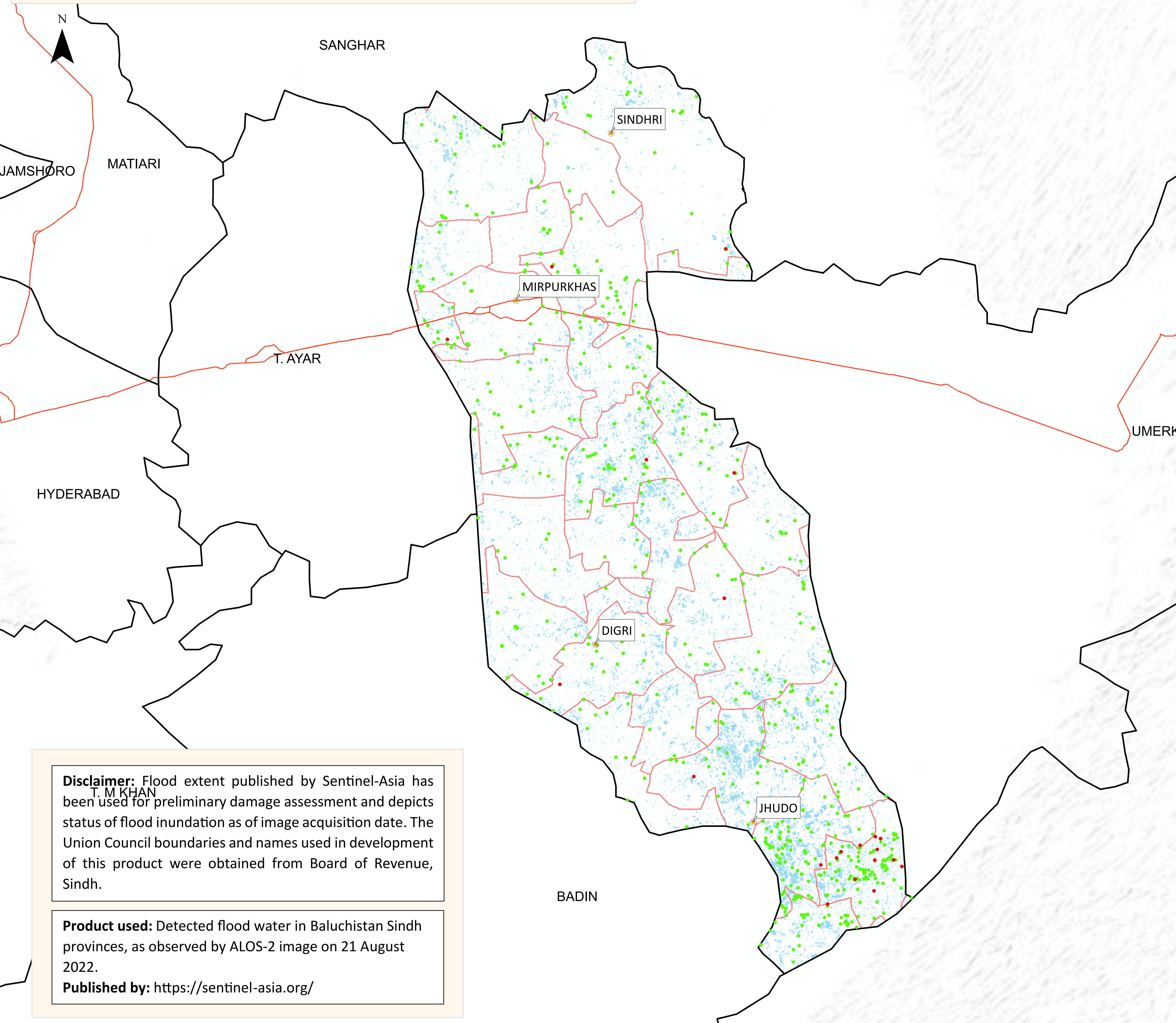


# Flood Inundation in Mirpurkhas District



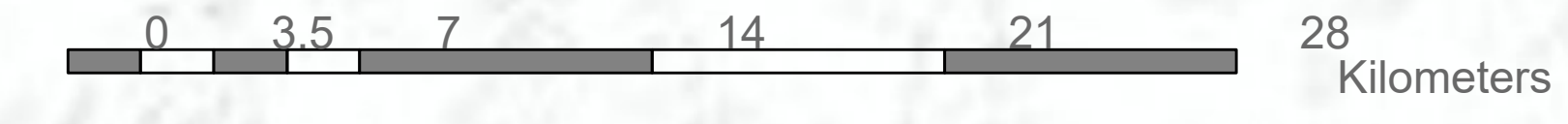
District Profile		
District Area	3,319.17 Sq.Km	
Area Inundated	237.16 Sq.Km	7.15%
Crop Land	703,738.47 Acres	
Crop Land Inundated	52,777.39 Acres	7.50%
Rainfall (Jul-Aug)	436 mm	
Population (as per 2017 Census)	1,492,210	
Affected Union Councils	51 Out of 51	

UC-wise Affected Villages		
Name	Submerged in Water (No.)	Surrounded By Water (No.)
FAZAL BHAMBRO	10	79
ROSHANABAD	2	78
A	1	12
BALOCHABAD	1	40
DENGAN	1	27
DILAWAR HUSSAIN	1	27
DOULATPUR	1	17
KANDIARI	1	22
KHUDADAD	1	9
MIR GHULAM HUSSAIN	1	39
SOFFAN SHAH	1	16
TALHI	1	6
AHORI	-	30
BHURGAN	-	2
BHURGARI	-	12
BUDHO QAMBRANI	-	4
DADHA	-	1
DUMBALO	-	1
HAJI HADI BUX	-	12
HALE POTA	-	1
JAWARIASOR	-	21
JHULURI	-	19
KANGORO	-	6
KHAIRPUR	-	6
KHAN	-	18
KHIRAH	-	6
KOT GHULAM MUHAMMAD	-	1
MAKHAN SAMOON	-	20
MIR IMAM BUX	-	7
MIR KHUDA BUX	-	10
MIRPUR OLD	-	14
MIRWAH	-	13
MOHRANO	-	4
NAUABAD	-	2
NAUKOT	-	32
PABAN	-	22
PADHRIO	-	5
PANGRIO	-	5
SANJAR CHANGTHARPARKAR	-	3
SHADI PALI	-	2
TANDO JAN MOHAMMAD	-	6
TURK ALL MARL	-	12

**Disclaimer:** Flood extent published by Sentinel-Asia has been used for preliminary damage assessment and depicts status of flood inundation as of image acquisition date. The Union Council boundaries and names used in development of this product were obtained from Board of Revenue, Sindh.

**Product used:** Detected flood water in Baluchistan Sindh provinces, as observed by ALOS-2 image on 21 August 2022.

**Published by:** <https://sentinel-asia.org/>



● Cities/Towns  
● Submerged under Water  
● Surrounded by Water  
 Union Councils  
 Highways  
 Flood Water

Sources: Esri, USGS, NOAA, Sources: Esri, Garmin, USGS, NPS